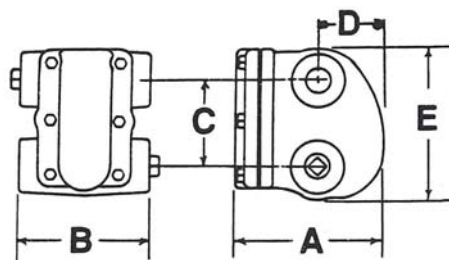
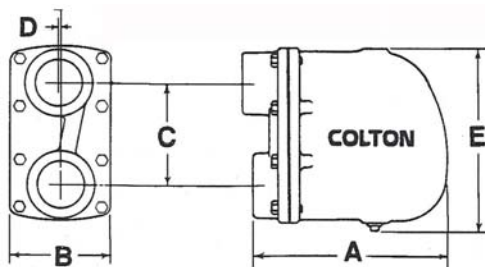


# DRAIN TRAPS FOR GASEOUS SYSTEMS – CFA Series



3/4" – 1" All Models  
1-1/4" CFA-015, CFA-030



1-1/4" CFA-075, CFA-150  
1-1/2" – 2" All Models



## CONSTRUCTION

Colton float type drain traps are compact, of rugged design, with easy access to all interior parts. The body is cast with two inlet and two outlet pipe connections that permit four combinations\*

\* Except the 1-1/4" CFA-075, 150 and all 1-1/2" and 2" models which are piped through the cover

## RATINGS

PMD (maximum differential pressure): See model selection  
TMO (maximum operating temperature): 400°F  
PMA (maximum allowable pressure): 250 psi  
TMA (maximum allowable temperature): 450°F

## MATERIALS

Part	Description
Cover	Cast Iron, ASTM-A278 Class 30
Body	Cast Iron, ASTM-A278 Class 30
Mechanism	Stainless Steel
Internal Plug	Bronze
Float	Stainless Steel
Gasket	Non-Asbestos Fiber
Cover Bolts	Steel, Grade 5
Plug	Cast Iron, ASTM-A278 Class 30

## DIMENSIONS AND WEIGHTS

SIZE		MODELS	DIMENSIONS										WEIGHT	
mm	in		A		B		C		D		E		kg	lbs
20	3/4	CFA-015, 030, 075, 150	159	6-1/4	140	5-1/2	84	3-5/16	76	3	146	5-3/4	4	9
25	1	CFA-015, 030, 075, 150	159	6-1/4	140	5-1/2	84	3-5/16	76	3	146	5-3/4	4	9
32	1-1/4	CFA-015, 030	159	6-1/4	146	5-3/4	76	3	97	3-13/16	146	5-3/4	4.3	9-1/2
32	1-1/4	CFA-075, 150	216	8-1/2	108	4-1/4	76	3	18	11/16	213	8-13/32	8.2	18
40	1-1/2	CFA-015, 030, 075, 150	216	8-1/2	108	4-1/4	76	3	18	11/16	213	8-13/32	8.2	18
50	2	CFA-015, 030, 075, 150	249	9-13/16	125	4-15/16	125	4-15/16	3	1/8	232	9-1/8	11.8	26

Colton has a policy of continuous product research and improvement and reserves the right to change design and specifications without notice.



Tel: 1-888-300-9155 Fax: 1-888-300-9160 www.COLTONIND.com info@coltonind.com

# DRAIN TRAPS FOR GASEOUS SYSTEMS – CFA Series



## CAPACITIES (Gross) – Lbs. condensate per hour @ 150°F

Pipe Size	Model No.	Pressure Differential (PSIG)														
		1/4	1/2	1	2	5	10	15	20	25	30	40	50	75	100	150
3/4	CFA-015	504	666	882	1175	1417	1806	1942	—	—	—	—	—	—	—	—
1	CFA-015	504	666	882	1175	1417	1806	1942	—	—	—	—	—	—	—	—
1-1/4	CFA-015	1084	1390	1770	2239	2962	3612	4226	—	—	—	—	—	—	—	—
1-1/2	CFA-015	1987	3070	4334	5960	9030	11920	13726	—	—	—	—	—	—	—	—
2	CFA-015	4154	5057	6502	8399	12461	16254	19685	—	—	—	—	—	—	—	—
3/4	CFA-030	504	666	882	1175	1417	1806	1942	2186	2348	2475	—	—	—	—	—
1	CFA-030	504	666	882	1175	1417	1806	1942	2186	2348	2475	—	—	—	—	—
1-1/4	CFA-030	678	903	1247	1644	2167	2709	3034	3251	3431	3612	—	—	—	—	—
1-1/2	CFA-030	1806	2348	3070	4154	6140	8308	9933	10836	11920	12642	—	—	—	—	—
2	CFA-030	2348	3251	4515	6140	9319	12281	14087	15532	16796	18060	—	—	—	—	—
3/4	CFA-075	289	385	506	659	939	1264	1436	1581	1680	1753	2023	2222	2620	—	—
1	CFA-075	289	385	506	659	939	1264	1436	1581	1680	1753	2023	2222	2620	—	—
1-1/4	CFA-075	705	994	1147	1644	2403	3342	3884	4334	4696	5057	5509	5960	6863	—	—
1-1/2	CFA-075	958	1309	1734	2348	3431	4787	5509	6140	6682	7224	7946	8579	9752	—	—
2	CFA-075	1536	1987	2709	3612	5599	7496	8578	9391	9933	10475	11558	12281	13906	—	—
3/4	CFA-150	181	244	316	416	597	750	903	1020	1120	1201	1355	1500	1753	2006	2148
1	CFA-150	181	244	316	416	597	750	903	1020	1120	1201	1355	1500	1753	2006	2148
1-1/4	CFA-150	506	669	867	1139	1644	2167	2620	2981	3206	3431	3748	4064	4787	5329	5690
1-1/2	CFA-150	772	939	1228	1608	2348	3070	3703	4154	4515	4876	5418	5779	6863	7585	8127
2	CFA-150	994	1219	1589	2212	3523	4696	5418	5870	6321	6863	7585	8342	9933	11017	11920

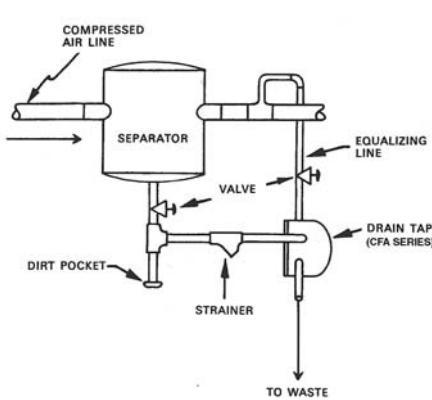


Fig. 1

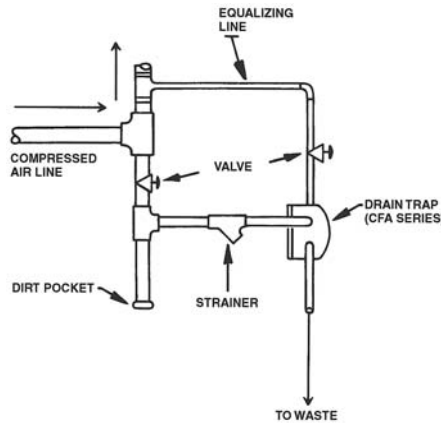


Fig.2

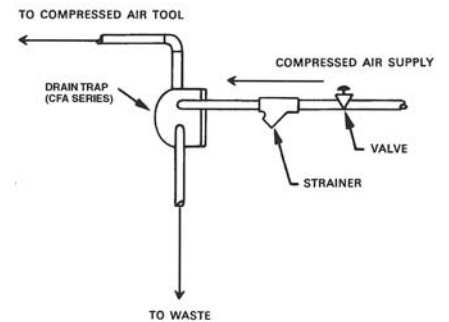


Fig.3

### Fig. 1 & Fig. 2

An equalizing line must be installed between the top of the trap body and the compressed air supply. This line prevents air binding, and allows water to enter the trap.

### FIG. 3

This shows a drain trap used in the supply line to a compressed air tool. In this case the supply to the tool may be taken from the tapping in the top of the trap body. The equalizing line is not necessary.

Colton has a policy of continuous product research and improvement and reserves the right to change design and specifications without notice.